

BMJ Open Efficacy of coupled plasma filtration adsorption (CPFA) in patients with septic shock: A multicenter randomised controlled clinical trial

Sergio Livigni,¹ Guido Bertolini,² Carlotta Rossi,² Fiorenza Ferrari,¹ Michele Giardino,² Marco Pozzato,³ Giuseppe Remuzzi,² GiViTI: Gruppo Italiano per la Valutazione degli Interventi in Terapia Intensiva (Italian Group for the Evaluation of Interventions in Intensive Care Medicine) is an independent collaboration network of Italian Intensive Care units

To cite: Livigni S, Bertolini G, Rossi C, *et al.* Efficacy of coupled plasma filtration adsorption (CPFA) in patients with septic shock: A multicenter randomised controlled clinical trial. *BMJ Open* 2014;**4**:e003536. doi:10.1136/bmjopen-2013-003536

► Prepublication history and additional material for this paper is available online. To view these files please visit the journal online (<http://dx.doi.org/10.1136/bmjopen-2013-003536>).

Received 17 July 2013
Revised 9 December 2013
Accepted 11 December 2013



CrossMark

For numbered affiliations see end of article.

Correspondence to

Dr Guido Bertolini;
guido.bertolini@marionegri.it

ABSTRACT

Objectives: Coupled plasma filtration adsorption (CPFA, Bellco, Italy), to remove inflammatory mediators from blood, has been proposed as a novel treatment for septic shock. This multicenter, randomised, non-blinded trial compared CPFA with standard care in the treatment of critically ill patients with septic shock.

Design: Prospective, multicenter, randomised, open-label, two parallel group and superiority clinical trial.

Setting: 18 Italian adult, general, intensive care units (ICUs).

Participants: Of the planned 330 adult patients with septic shock, 192 were randomised to either have CPFA added to the standard care, or not. The external monitoring committee excluded eight ineligible patients who were erroneously included.

Interventions: CPFA was to be performed daily for 5 days, lasting at least 10 h/day.

Primary and secondary outcome measures: The primary endpoint was mortality at discharge from the hospital at which the patient last stayed. Secondary endpoints were: 90-day mortality, new organ failures and ICU-free days within 30 days.

Results: There was no statistical difference in hospital mortality (47.3% controls, 45.1% CPFA; $p=0.76$), nor in secondary endpoints, namely the occurrence of new organ failures (55.9% vs 56.0%; $p=0.99$) or free-ICU days during the first 30 days (6.8 vs 7.5; $p=0.35$). The study was terminated on the grounds of futility. Several patients randomised to CPFA were subsequently found to be undertreated. An a priori planned subgroup analysis showed those receiving a CPFA dose >0.18 L/kg/day had a lower mortality compared with controls (OR 0.36, 95% CI 0.13 to 0.99).

Conclusions: CPFA did not reduce mortality in patients with septic shock, nor did it positively affect other important clinical outcomes. A subgroup analysis suggested that CPFA could reduce mortality, when a high volume of plasma is treated. Owing to the inherent potential biases of such a subgroup analysis, this result can only be viewed as a hypothesis generator and should be confirmed in future studies.

ClinicalTrials.gov: NCT00332371; ISRCTN24534559.

INTRODUCTION

The host response against pathogens is a complex one. It is modulated through the production of numerous mediators that, among other mechanisms, promote proinflammatory and anti-inflammatory responses.^{1–4} The balance between these two pathways heavily influences the outcome.^{4–9} The amount and timing of release of different mediators, their relatively short half-lives, their limited range of action, their considerable redundancy and pleiomorphisms and the underexpression or overexpression of their receptors^{1 10–12} have negatively affected the numerous therapeutic attempts to neutralise specific molecules.¹² The repeated failure of this strategy suggested a potentially greater utility may be achieved through simultaneous removal of several mediators to rebalance the immune response. This can be accomplished by various blood purification techniques, of which coupled plasma filtration adsorption (CPFA) can non-selectively remove the majority of soluble inflammatory mediators.¹³

Early experience with CPFA showed an increased survival in a rabbit model of endotoxin-induced septic shock.¹⁴ The first clinical study showed that a single treatment lasting 10 h significantly improved the haemodynamic status.¹⁵ These preliminary observations were confirmed in a study of 10 septic shock patients in whom norepinephrine requirements were progressively reduced and eventually discontinued after an average of

five daily CPFA sessions,¹⁶ without adverse events. Subsequently, several Italian ICUs adopted CPFA in septic shock patients with promising results, and were willing to formally evaluate its efficacy. GiViTI, the Italian ICU network, thus launched a randomised multicentre clinical trial to assess the efficacy of CPFA in reducing mortality of critically ill patients with septic shock.

METHODS

Written consent was obtained from the patient when possible; otherwise physicians enrolled patients according to the article 4.8.15 of the Guidelines for Good Clinical Practice.¹⁷

Setting and participants

The study was performed in 18 adult ICUs who regularly used CPFA in the treatment of septic shock. Patients >18 years of age with septic shock either at or during their admission to the ICU were eligible for study entry, provided that CPFA could be started within 6 h from the occurrence of hypotension refractory to fluid resuscitation. This was made by the attending physician (present 24/7) using explicit criteria.¹⁸ Reasons for exclusion prior to randomisation were: pregnancy, cardiopulmonary resuscitation, coma (GCS \leq 8) due to an organic cerebral disease, metastatic cancer, contraindication to a haemopurification technique, an estimated life expectancy less than 2 weeks, prior inclusion in the study, admission from another ICU where the patient remained for >24 h and lack of informed consent.

The Project Margherita electronic case report form (eCRF) was used for this study.^{19 20} The core data included demographics, admission diagnoses, severity of infection on admission, comorbidities, location of the patient prior to ICU admission, surgical status, reasons for ICU admission, Simplified Acute Physiology Score II (SAPS II) variables²¹ on admission, organ failures and diseases occurring during their ICU stay, the severity of infection reached, major procedures and interventions and ICU and hospital outcomes. For enrolled patients, their clinical conditions, including the sequential organ failure assessment (SOFA) score,²² the Risk of renal dysfunction, Injury to the kidney, Failure of kidney function, Loss of kidney function and End-stage kidney disease (RIFLE) criteria^{22a} for acute renal dysfunction and CPFA parameters were collected at the time of randomisation and then daily until ICU discharge or for a maximum of 21 days. Interventions to assure study homogeneity and quality are described in the online supplementary material.

Randomisation and interventions

Eligibility criteria were flagged up in real time by the eCRF, which prompted the clinician to enrol the patient or to register reasons for not doing so. Once enrolled, the patients were randomly allocated by the eCRF on a 1:1 basis to either have CPFA added to the standard

care, or not. A blocked randomisation schedule (randomly permuting blocks of four and six)²³ was implemented in the eCRF, with stratification according to the centre and the presence of septic shock on admission. The allocation was securely saved in the database and revealed only once baseline additional data collection were completed. All these procedures were implemented to guarantee allocation concealment.²⁴

Coupled plasma filtration adsorption

CPFA was developed to non-specifically remove larger mediators during systemic inflammation with an extracorporeal circuit consisting of a plasma filter, a resin cartridge and a high-flux dialyser.²⁵

CPFA was performed with the use of a four-pump modular treatment (Lynda, Bellco, Mirandola, Italy) consisting of a plasma filter (0.45 m² polyethersulfone) and a following adsorption on an unselective hydrophobic resin cartridge (140 mL for 70 g, with a surface of about 700 m²/g) and a final passage of the reconstituted blood through a high-permeability 1.4 m² polyethersulfone haemofilter, in which convective exchanges may be applied in a postdilution mode (figure 1).²⁶

The postdilution reinfusion rate could be set up to 4 L/h. The blood flow was maintained between 150 and 200 mL/min, while the plasma flow was controlled by a filtration fraction ranging from 10% to 18% of blood flow.²⁷ More specifically, the filtration fraction should be set to 10% in the first hour and then it should be gradually increased to the target value of 18%. The minimum volume of plasma treated per day should be 10 L, corresponding to a blood flow of 150 mL/min and a filtration fraction of 12%.

The reinfusion solution, sterile and pyrogen-free, with bicarbonate buffer, contained the following composition (mmol/L): Na 140, K 1.5, Ca 2, Mg 0.75, Cl 108, bicarbonate 35, acetate 4 and glucose 5.55.

All fluids were administered at room temperature. During treatment, the patient's temperature was to be maintained possibly within physiological limits, and anyway higher than 35°C. The anticoagulation protocol is described in the online supplementary material.

According to the available clinical evidence, CPFA was to be repeated daily for the first 5 days, lasting at least 10 h each time, so that an average of 0.15 L/kg/day of plasma should have been treated per day.

Outcomes, follow-up and plan of analysis

The primary endpoint was mortality at discharge from the hospital in which the patients were last treated. Thus, for patients transferred to another hospital, mortality was assessed at the discharge from the hospital in which the patients last stayed. To minimise the bias due to the decision to have the relative dying at home, patients discharged in a terminal condition (life expectancy <2 weeks as estimated by the attending physician) were considered to have died at the time of hospital discharge. The primary analysis was by intention-to-treat;

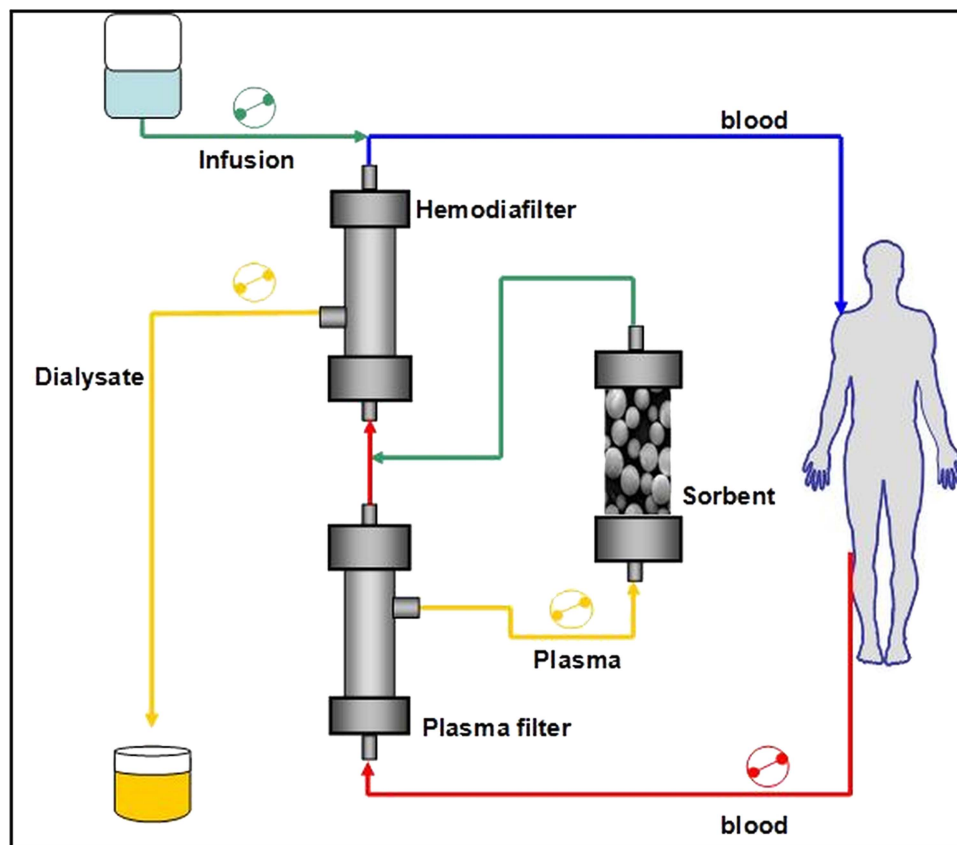


Figure 1 Coupled plasma filtration adsorption schema.

however, a per-protocol analysis was also planned to assess the impact of protocol violations, if any, on the primary endpoint. Secondary endpoints were: mortality within 90 days of randomisation; the proportion of patients who developed ≥ 1 new organ failures during their ICU stay (defined by an organ SOFA score of 3 or 4²²) and ICU-free days during the first 30 days from randomisation.

Timing of intervention is considered extremely important in septic shock. Thus, two subgroup analyses of the primary endpoint were pre-planned, namely the assessment of outcomes in patients with septic shock on ICU admission or who developed it during their ICU stay and patients starting CPFA within or later than 4 h of randomisation.

The study was sized to have 80% power to detect an improvement in hospital mortality from an expected 63% in the controls to 47% with CPFA (25% relative improvement), with a two-tailed 5% type I error. A total of 330 patients were required. A Bayesian approach (see online supplementary material) was adopted for interim analyses.²³

Premature termination of the trial

In November 2010, the External Data and Safety Monitoring Committee (EDSMC) prompted an early termination of the study on the grounds of futility. To reach the a priori determined goal of a 25% reduction in mortality, in the second part of the study, a 23%

hospital mortality in the CPFA group would have been required, which was considered implausible. Further concerns were the low recruitment rate and the high number of protocol violations in the CPFA arm in terms of low volume of plasma treated per day.

Statistical analyses

Hospital mortality was analysed using the χ^2 test. The effect size was expressed in terms of absolute risk difference with its 95% CI.²⁸ With regard to secondary endpoints and subgroup analyses, categorical variables were compared with χ^2 or Fisher's exact tests, while a Student t test was used for continuous variables, after having assessed normality through the Kolmogorov-Smirnov, the Shapiro-Wilks tests and the normal probability plot, and homoscedasticity through the Levene's test. Mortality within 90 days of randomisation was assessed using Kaplan-Meier curves with any differences investigated through logrank testing.

As a number of protocol violations in the CPFA arm were registered due to a lower than planned volume of plasma treated, we also performed a per-protocol analysis of the primary endpoint, as determined a priori. The analysis by the 'adhesion to the protocol' was indeed planned to involve patients who did not have relevant protocol violations, to assess the possible influence of such violations on the outcome.

Hospital mortality was evaluated according to tertiles of the mean volume of plasma treated per kg per day.



Any association between tertiles and hospital mortality was tested with the χ^2 test and the Cochran-Armitage test for trend. As any benefit of randomisation was lost, comparison with the control group was performed through a logistic regression model that allowed to adjust for possible confounders (see online supplementary material).

RESULTS

Between January 2007 and November 2010, a total of 192 patients had been randomised. Recruitment in each ICU lasted a median of 22 months (IQR 13–26). During this period, 386 patients with septic shock were excluded as being non-eligible (see online supplementary material). Central monitoring subsequently identified 14 enrolled patients whose eligibility criteria were doubtful. Further clinical information was retrieved and provided to the EDSMC who determined that eight of these patients (5 CPFA, 3 control) were erroneously enrolled (see online supplementary material). Analysis was performed by intention-to-treat on the 184 remaining patients.²⁹ Figure 2 denotes the flow of participants.

Table 1 shows the patients' characteristics; further details are provided in the online supplementary material. One episode of surgical wound bleeding was registered as possibly related to CPFA in a patient receiving drotrecogin alfa (activated).

Overall, 44 patients (48.4%) had less than the minimum amount, as recommended by the protocol, of plasma treated over the first 5 days. They were evenly distributed across centres. To better express and investigate the phenomenon of undertreatment, and following the emerging concept of dose of renal replacement therapy,³⁰ we computed the volume of plasma treated in L/kg/day. In the 91 patients randomised in the CPFA arm, a mean of 0.15 L/kg/day were treated for the first 5 days (tertiles 0.12–0.18), and 0.18 for the first 3 days. Table 2 lists the reasons for undertreatment. Four patients died during CPFA, one before initiating the treatment, two at the very first moment and one after the first 0.09 L kg of plasma treated. The mean time to start CPFA after septic shock identification was 5.7 h (SD 3.8); 38 patients started within 4 h. In the control group, in violation of the protocol, two patients were treated with CPFA; one died at 7 days post-randomisation, the other was discharged alive from the hospital 37 days after randomisation.

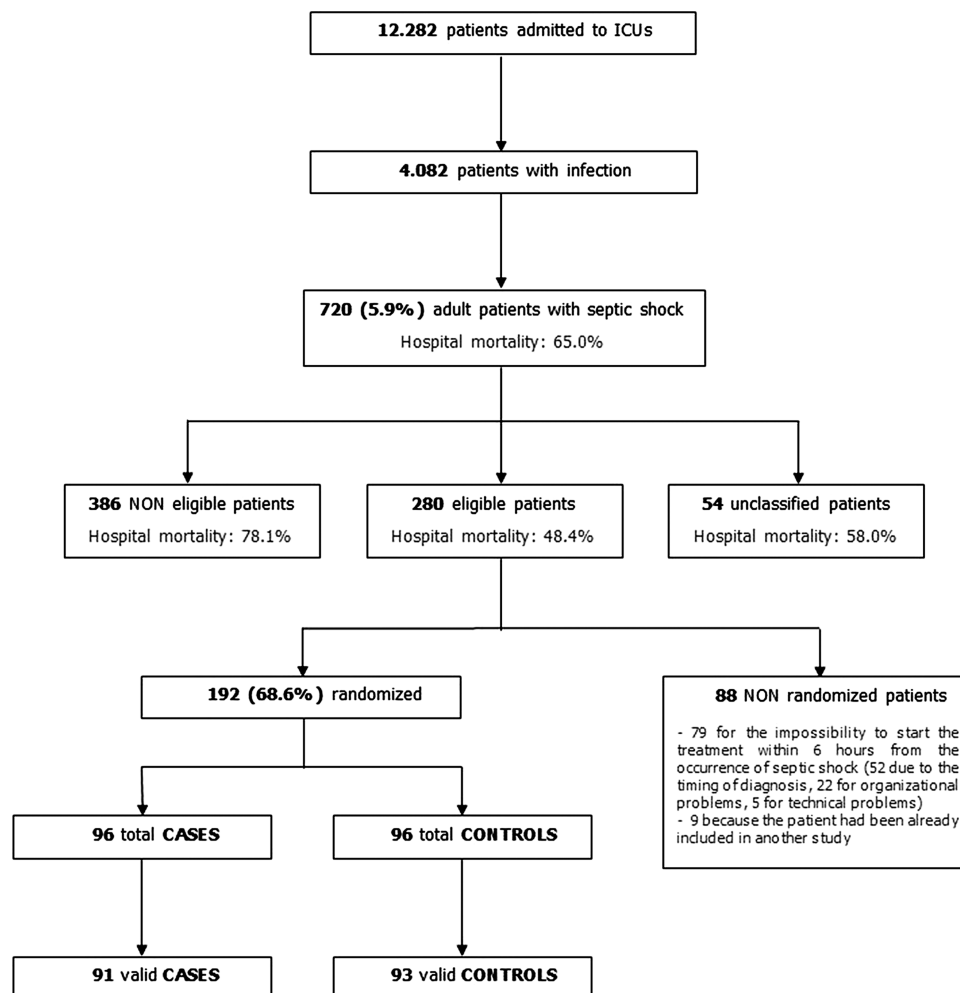


Figure 2 Flow chart of participants.

Table 1 Characteristics of the patients before randomisation

	Controls (n=93)	CPFA (n=91)
Sex (male), n (%)	65 (69.9)	56 (61.5)
Age (years), n (%)		
Overall, mean [SD]	64.9 [13.3]	63.6 [14.4]
17–45	10 (10.8)	9 (9.9)
46–65	34 (36.6)	35 (38.5)
66–75	23 (24.7)	27 (29.7)
>75	26 (28.0)	20 (22.0)
BMI (%)		
Underweight	5 (5.4)	2 (2.2)
Normal weight	34 (36.6)	27 (29.7)
Overweight	24 (25.8)	31 (34.1)
Obese	30 (32.3)	31 (34.1)
Length of stay before ICU admission (days), mean [SD]	6.5 [13.8]	6.2 [11.8]
Source of admission, n (%)		
Emergency room	16 (17.2)	31 (34.1)
Surgical ward	43 (46.2)	31 (34.1)
Medical ward	29 (31.2)	27 (29.7)
Other ICU	5 (5.4)	2 (2.2)
Surgical status, n (%)		
Not surgical	43 (46.2)	54 (59.3)
Elective surgical	8 (8.6)	6 (6.6)
Emergency surgical	42 (45.2)	31 (34.1)
Trauma, n (%)	6 (6.5)	5 (5.5)
Comorbidities, n (%)		
None	12 (12.9)	18 (19.8)
Mary Charlson Index, median [Q1–Q3]	2 [0–3]	1 [0–2]
Reason for admission, n (%)		
Monitoring/weaning	7 (7.5)	7 (7.7)
Respiratory failures	80 (86.0)	69 (75.8)
Cardiovascular failures	50 (53.8)	58 (63.7)
Neurological failures	12 (12.9)	9 (9.9)
Renal failure	24 (25.8)	33 (36.3)
Multiple organ failures	59 (63.4)	65 (71.4)
Top 3 non-infectious diseases on admission, n (%)		
Metabolic disorder	23 (24.7)	25 (27.5)
Gastrointestinal perforation	16 (17.2)	15 (16.5)
ALI	16 (17.2)	14 (15.4)
SAPS II on admission, median [Q1–Q3]	53 [43–67]	51 [42–65]
SOFA at randomisation, median [Q1–Q3]	9 [8–11]	9 [8–11]
RIFLE at randomisation, n (%)		
No risk	51 (54.8)	29 (31.9)
Risk	16 (17.2)	22 (24.2)
Injury	10 (10.8)	21 (23.1)
Failure	16 (17.2)	19 (20.9)
Septic shock on admission, n (%)		
Missing	39 (42.4)	43 (47.8)
	1	1
Site of infection, n (%)		
Pneumonia	25 (26.9)	30 (33.0)
Peritonitis	28 (30.1)	25 (27.5)
Primary bacteraemia	1 (1.1)	8 (8.8)
Cholecystitis/colangitis	5 (4.3)	3 (3.3)
Urinary tract infection	1 (1.1)	2 (2.2)
Other	23 (24.7)	19 (20.9)
Multisite	10 (10.8)	4 (4.4)
Top five microorganisms isolated, n (%)		
Non-ESBL producing <i>Escherichia coli</i>	13 (13.7)	14 (15.9)
<i>Candida albicans</i>	4 (4.2)	6 (6.8)

Continued

Table 1 Continued

	Controls (n=93)	CPFA (n=91)
Methicillin-resistant <i>Staphylococcus aureus</i>	10 (10.5)	4 (4.5)
Penicillin sensitive <i>Pneumococcus</i>	2 (2.1)	4 (4.5)
Ampicillin-resistant vancomycin-sensitive <i>Enterococcus faecalis</i>	3 (3.2)	3 (3.4)
Gram-positive bacteria	25 (26.3)	27 (30.7)
Gram-negative bacteria	29 (30.5)	27 (30.7)

Q1–Q3=first and third quartiles; underweight=for male, BMI<20, for woman, BMI<19; normal weight=for man, BMI 20–25, for woman, BMI 19–24; overweight=for male, BMI 25–30, for female, BMI 24–29; obese=for male, BMI>30, for female, BMI>29; respiratory failure=need of ventilatory support to maintain gas exchange; cardiovascular failure=need of vasoactive drugs to provide sufficient pump action; neurological failures (GCS≤8); Renal failure=RIFLE score: injury or higher.

ALI, acute lung injury; BMI, body mass index; CPFA, coupled plasma filtration adsorption; ESBL, extended-spectrum β-lactamase; GCS, Glasgow Coma Scale; ICU, intensive care unit; RIFLE, Risk of renal dysfunction, Injury to the kidney, Failure of kidney function, Loss of kidney function and End-stage kidney disease; SAPS, simplified acute physiology score; SOFA, sequential organ failure assessment.

No statistical difference was found in hospital mortality with 47.3% dying in the control group (44/93) versus 45.1% dying in the CPFA group (41/91, $p=0.76$), with an absolute risk difference of 2.2% (95% CI –12.2% to 16.6%). The 90-day survival curves of the two groups substantially overlapped (logrank test, $p=0.48$; figure 3). Secondary endpoints did not statistically differ: the occurrence of new organ failure was 55.9% in the control versus 56% for CPFA patients ($p=0.99$); the free ICU days during the first 30 days postrandomisation were 6.8 in the control group versus 7.5 in the CPFA group ($p=0.35$). There were also no statistical differences in the a priori determined subgroups. Hospital mortality in patients with septic shock on ICU admission was comparable (16/39 (41%) for control vs 19/43 (44.2%) for CPFA; $p=0.77$). The same was observed for the subgroup of patients who developed septic shock during their ICU stay (27/53 (50.9%) control vs 21/47 (44.7%) CPFA; $p=0.53$). Likewise, no statistical difference in mortality was observed between controls 44/93 (47.3%), and patients starting CPFA within 4 h from randomisation (17/38 (44.7%); $p=0.88$), nor in those who started CPFA after 4 h (20/46 (43.5%); $p=0.76$). In seven patients, the timing of CPFA initiation was missing. Eventually, no effect on the number of patients per ICU was observed.

The per-protocol analysis revealed a non-significant trend in hospital mortality according to the tertiles of volume of plasma treated per kg per day over the first 5 days (figure 4). The characteristics of the groups

defined by the tertiles are shown in the online supplementary material. The logistic regression model, aimed at adjusting for possible confounders, verified that hospital mortality in patients falling within the third tertile (≥ 0.18 L/kg/day of plasma treated over the first 5 days) was statistically lower than in the control group (OR 0.36, 95% CI 0.13 to 0.99; see table 3). We then performed two sensitivity analyses, namely limiting the evaluation of the volume of plasma treated to the first 3 days and excluding from the control and treated groups patients who died in the first 24 h postrandomisation. The first analysis was aimed at assessing whether any possible benefit of CPFA was obtained before 5 days; the second was intended to minimise any possible selection bias as patients who died early could not have entered the highest tertile of treated plasma due to insufficient time. Both sensitivity analyses (presented in the online supplementary material) confirmed the same estimates, even though statistical significance was lost for lack of power.

DISCUSSION

The prognosis of critically ill patients with septic shock remains poor, with mortality rates still around 50–60%.^{20 31} All attempts to find a ‘magic bullet’ to restore immune derangements during sepsis and improve the outcomes have failed, highlighting the complexity of the immune response, including a marked inpatient variability in terms of magnitude of response, timing and trajectory and our continued lack of full understanding.

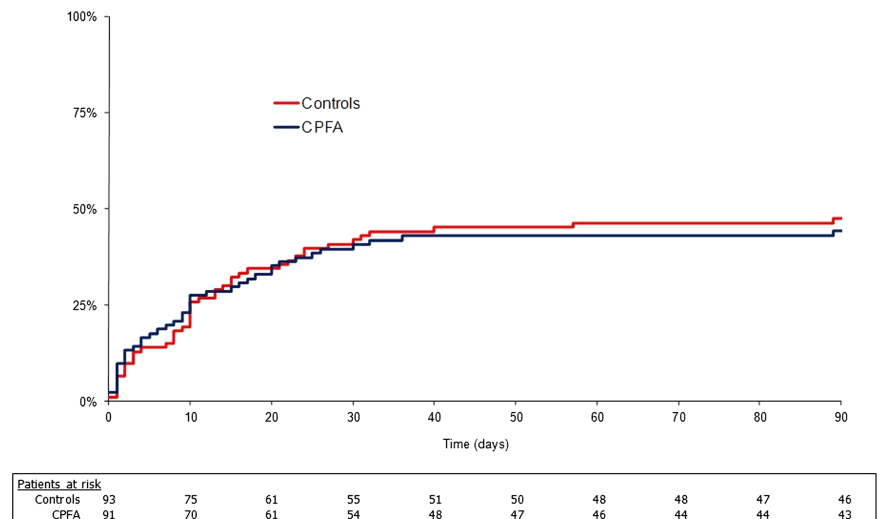
Rather than targeting a specific molecule, CPFA offered a more general means of reducing the circulating inflammatory mediator load. Following promising results in early phase studies,^{15 16 25} GiViTI performed this randomised clinical trial to assess the efficacy of CPFA in reducing hospital mortality of patients affected by septic shock.

The main findings

After randomising more than half the planned number of patients, we found no statistical difference with the use of CPFA in hospital mortality, the occurrence of new organ failures or the overall clinical evolution. To

Table 2 Reasons for undertreatment in the coupled plasma filtration adsorption arm (n=44)

	n	Per cent
Clotting of the circuit	21	47.7
Technical problems	5	11.4
Organisational problems	4	9.1
Patient's death	4	9.1
Lack of specialised personnel	3	6.8
Family request to stop CPFA	1	2.3
Other	6	13.6

**Figure 3** Survival curves.

reverse these results, with the sample still to be randomised, implausible data should have been observed from then on. Furthermore, this study was powered from an anticipated 63% hospital mortality in the control group. Although such an estimation, coming from previous GiViTI data, was confirmed in the whole sample (figure 2), the eligibility criteria selected a subgroup where mortality was sensibly lower (47.3%), thereby reducing the power of the study. Thus, the EDSMC considered that continuing to spend money in a clinical trial that had a little chance of demonstrating efficacy was undesirable and asked for a premature termination on the grounds of futility, although the anticipated, non-binding Bayesian futility criteria for stopping the trial were not fulfilled.

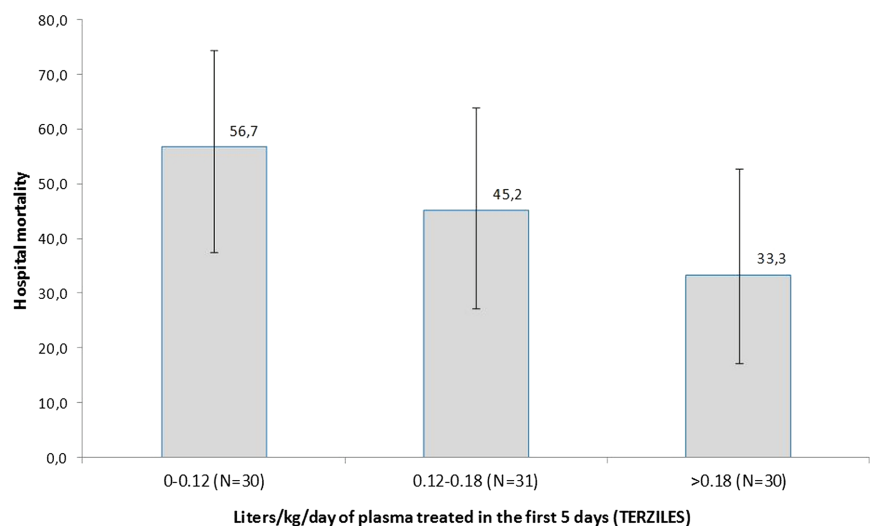
28-day mortality due to Food and Drug Administration stipulations. However, the mortality rate attributable to sepsis continues long after the initiation of the acute event³³; indeed, 16.8% of our study patients were still in the ICU beyond 28 days after randomisation. On the other hand, overextending the follow-up period has the disadvantage of diluting the phenomenon, with the inclusion of competing causes of death. We thus considered mortality at the time of discharge from the hospital into which they were last admitted following their septic shock episode. At that point, the patient no longer requires aggressive, specialised, interdisciplinary care, which means he or she had survived the septic shock episode. A 90-day mortality was anyway recorded and considered as secondary endpoint.

The dilemma of primary endpoint

The correct primary endpoint of clinical trials in septic shock is still debated.³² Most of the studies have adopted

The problem of undertreatment

Nearly half of the patients randomised to CPFA were undertreated as per protocol stipulation. This poses two

Figure 4 Hospital mortality according to the quantity of volume of plasma treated (whiskers represent 95% CI).

χ^2 test for general association, 3.26; $p = 0.20$
Cochran-Armitage test for trend, 1.82; $p = 0.069$

**Table 3** Results of the logistic regression model on hospital mortality

Variable	OR	95% CI	p Value
Volume of plasma treated (L/kg/day)			
CPFA, ≤ 0.18 (1° and 2° tertiles) vs controls	1.52	0.73 to 3.17	0.033
CPFA, > 0.18 (3° tertile) vs controls	0.36	0.13 to 0.99	
Age (decades)	1.57	1.19 to 2.07	0.001
Source of admission			
Other ICU vs medical ward	0.28	0.04 to 1.89	
Emergency room vs medical ward	0.27	0.11 to 0.67	0.021
Surgical ward vs medical ward	0.34	0.15 to 0.77	
Renal failure at admission	4.08	1.47 to 11.32	0.007
Cholecystitis or cholangitis on admission	0.18	0.04 to 0.75	0.018

Dependent variable: hospital mortality. Number of patients = 184. Prediction: likelihood ratio test: 39.93, degrees of freedom: 8, $p < 0.0001$; % pairs: concordant 77.4%; discordant 22.2%; Somers' D: 0.55; receiver operating characteristic (ROC) curve area: 0.78. Goodness of fit Hosmer-Lemeshow goodness-of-fit C test: 8.22; eight degrees of freedom; p value = 0.41. ICU, intensive care unit.

crucial questions: the true feasibility of the technique in the ICU and the possible relationship between the overall negative result and such undertreatment. The main reason for not reaching the prescribed volume of plasma treated was clotting of the circuit (48%). This problem was encountered by all centres.

Why did the training of the centres not have an effect? Many factors could have contributed. First, CPFA involves a complex circuit that includes a haemofilter, a plasma filter and an adsorbing cartridge, and requires an adequate balance of flows, dilutions and anticoagulation. We used heparin for anticoagulation (see online supplementary material), the most frequently used drug in this regard, because the machine used in the study did not support regional anticoagulation with citrate. Nevertheless, heparin is difficult to manage, particularly in the critically ill. Many centres may have been too conservative either with the heparin dosage and/or the blood flow rate through the circuit, or there may be an insufficient antithrombin substrate for the heparin to be effective.³⁴ Second, because of the high cost of the procedure (about €1.200 per treatment), in most of the cases, the physicians did not start a new course of CPFA on the same day, in case of clotting of the circuit. Third, the training may have been (partly) ineffective. On the one hand, it only reached a few people per ICU. It was often difficult to involve the nephrologists, who, in many centres, are in charge of the procedure. On the other hand, despite excellent feedbacks from the participants, we cannot *a posteriori* exclude it was qualitatively suboptimal.

At any rate, the feasibility problems we have encountered in the present clinical trial suggest that the procedure, as implemented in this study, is not practicable in everyday clinical practice. Interestingly, regional anticoagulation with citrate represents a valid alternative to heparin as its anticoagulatory effect is limited to the extracorporeal circuit, without any systemic effect, and can be safely applied in the ICU.³⁵⁻³⁶ In a feasibility study carried out in 13 patients at high risk of bleeding, citrate regional anticoagulation was associated with a

significantly lower number of clotted CPFA cartridges than with the heparin.³⁷ The newer generation CPFA machine is able to apply citrate regional anticoagulation, and initial experiences in patients with septic shock demonstrate that a much higher volume of plasma can be safely treated.³⁸ Should these preliminary results be confirmed, the question whether the reason of our negative result was a problem of feasibility or efficacy would become essential, to avoid the risk of dismissing a potentially effective treatment for such a high mortality condition as septic shock.

The per-protocol analysis and its limits

Of note, patients who had a larger volume of plasma treated seemed to have reduced hospital mortality. This cannot be taken as conclusive evidence of the efficacy of CPFA. Even though the per-protocol analysis was planned a priori with the expected direction of the effect being stated in advance, and a dose-response relationship was found, a number of potential problems threaten the validity of this result. First, a subgroup definition for the per-protocol analysis (ie, tertiles of plasma treated) was based on characteristics measured after randomisation. Under such circumstances, the allocation to a subgroup may have been influenced by the intervention in relation to the severity of the patient, causing an important bias. This would be the case, for example, if the probability of circuit clotting was higher in the more severely ill patients. Actually, the characteristics of the three subgroups were somewhat unbalanced (see online supplementary material). We adjusted for possible confounders in the multivariate model to minimise this risk, but we were limited to prognostic factors collected in the database. Particularly, we have no data on the immunoinflammatory status of the patients to account for. Second, the subgroup allocation may have been influenced by the outcome. For example, early deaths could have prevented the treatment of high volume of plasma. Even if we standardised the treated volume to the duration in hours of CPFA, since the treatment started with a low filtration fraction to be gradually

increased to the target value (see online supplementary material), the first hours were characterised by a certain degree of undertreatment by design. In this case, an early death could have prevented the patient from being included in the third tertile, but not in the others, nor in the controls, spuriously influencing the result. We performed a sensitivity analysis by excluding early deaths from all groups, knowing that such an analysis could have greatly disadvantaged CPFA, if the lower number of early deaths were due to the efficacy of the technique. Interestingly, we verified that the strength of association was unchanged, albeit losing statistical significance for a lack of power, thereby excluding the presence of a differential outcome-related selection bias. Finally, the statistical significance of our results is quite thin; indeed, just one more death in the highest tertile subgroup would have rendered the difference in hospital mortality non-significant.

Study limitations

Almost 60% of patients with septic shock did not meet the inclusion criteria. The main reason was life expectancy less than 2 weeks. The mortality of these patients was in fact 98%. Nonetheless, we cannot exclude that the higher severity could have brought about a potentially greater possibility of response to intervention, at least for some patients. Future studies should consider this aspect.

One-third of the eligible patients were not randomised due to the very narrow window (6 h) for the patient's recruitment and initiation of the treatment. This would have particularly hampered the generalisability of results had the findings been positive.

Finally, the study was terminated early for reasons of futility, after almost 60% of the originally planned patients had been recruited. This reduced the possibility of studying phenomena emerging from the analyses with a significant power, as in the case of the volume of plasma treated. In any event, any subgroup analysis, regardless of the involved sample size, could only have generated hypotheses. Our interpretation of the findings is in itself a hypothesis, which would have been only more robust with a larger sample.

CONCLUSION

CPFA was not able to reduce mortality in patients with septic shock. This result strongly discourages the use of CPFA in the everyday clinical practice, as it was implemented in this study. Unfortunately, we were not able to discern whether the culprit of such a negative result was the lack of effectiveness (mainly due to widespread feasibility problems) rather than the lack of true efficacy. The subgroup analysis was suggestive of efficacy, if a high volume of plasma was treated. Although we have taken counter measures to minimise potential biases, these cannot be completely excluded. Hence, this result can only be viewed as hypothesis generating. Given the

new availability of citrate regional anticoagulation, we have designed a confirmatory, adaptive trial whose first step will be to prove this new technique easily allows high volume of plasma treated with CPFA.

Author affiliations

¹Servizio Anestesia e Rianimazione B-DEA, Ospedale San Giovanni Bosco, Torino, Italy

²IRCCS-Istituto di Ricerche Farmacologiche "Mario Negri": Centro di Ricerche Cliniche per le Malattie Rare Aldo e Cele Daccò, Ranica, Bergamo, Italy

³Servizio di Nefrologia e Dialisi, Ospedale San Giovanni Bosco, Torino, Italy

Collaborators Armando Alborghetti (Ponte San Pietro-BG); Bruno Balicco (Zingonia-BG); Franco Bonello (Ivrea-TO); Francesco Casino (Matera-MT); Giacomo Castiglione (Catania-CT); Marco Cavana (Aosta-AO); Paolo Conti (Firenze-FI); Tiziana D'Amato (Imperia-IM); Carlo Donadio (Pisa-PI); Emilio Fabbri (Forlì-FC); Fiorenza Ferrari (Torino-TO); Bertilla Fiorese (Brescia-BS); Mario Gaggiotti (Brescia-BS); Marco Lorenz (Zingonia-BG); Mariella Maio (Torino-TO); Massimo Manes (Aosta-AO); Marco Manganaro (Alessandria-AL); Valerio Mangani (Firenze-FI); Antonio Mannarino (Firenze-FI); Gianmariano Marchesi (Bergamo-BG); Paolo Martinelli (Firenze-FI); Agnese Meterangelis (Ponte San Pietro-BG); Giulio Mingardi (Bergamo-BG); Giuseppe Nardi (Roma-RM); Antonella Peralta (Sanremo-IM); Marco Pozzato (Torino-TO); Marco Riggio (Lecco-LC); Francesco Massimo Romito (Matera-MT); Rosa Salcuni (Ivrea-TO); Silvano Scaioli (Forlì-FC); Silvia Scarrone (Alessandria-AL); Mario Tavola (Lecco-LC); Marina Terzitta (Forlì-FC); Ernesto Turello (Alessandria-AL); Bruno Viaggi (Pisa-PI); Loretta Zambianchi (Forlì-FC).

Contributors All the authors substantially contributed to the conception and design interpretation of data, critically revising it and approved the final version of the manuscript, GB and CR were involved in the analysis of the data and GB involved in the drafting the article.

Funding This work was supported by the Belco SpA. The study was funded by GiViTI and through an unconditional research grant from Belco (Mirandola, Italy), the CPFA patent holder, who had no role in the study. GiViTI-Istituto di Ricerche Farmacologiche Mario Negri has full ownership of the data and of the dissemination policy of the results. GiViTI is the recipient of unconditional grants from Brahms and Astellas, who also had no role in this study.

Competing interests None.

Ethics approval Ethics Committee of all centers.

Provenance and peer review Not commissioned; externally peer reviewed.

Data sharing statement The full protocol is accessible at: <http://www.giviti.marionegri.it/COMPACT.asp> Guido Bertolini and Carlotta Rossi had full access to all study data and take responsibility for its integrity and the accuracy of data analysis. Further analyses will be provided on request to the corresponding author. Raw data are available on justified request.

Open Access This is an Open Access article distributed in accordance with the Creative Commons Attribution Non Commercial (CC BY-NC 3.0) license, which permits others to distribute, remix, adapt, build upon this work non-commercially, and license their derivative works on different terms, provided the original work is properly cited and the use is non-commercial. See: <http://creativecommons.org/licenses/by-nc/3.0/>

REFERENCES

1. Feezor RJ, Oberholzer C, Baker HV, *et al*. Molecular characterization of the acute inflammatory response to infections with gram-negative versus gram-positive bacteria. *Infect Immun* 2003;71:5803–13.
2. Bozza FA, Salluh JI, Japiassu AM, *et al*. Cytokine profiles as markers of disease severity in sepsis: a multiplex analysis. *Crit Care* 2007;11:R49.
3. Kellum JA, Kong L, Fink MP, *et al*. Understanding the inflammatory cytokine response in pneumonia and sepsis: results of the Genetic

- and Inflammatory Markers of Sepsis (GenIMS) Study. *Arch Intern Med* 2007;167:1655–63.
4. Angus DC, van der Poll T. Severe sepsis and septic shock. *N Engl J Med* 2013;369:840–51.
 5. Bochud PY, Calandra T. Pathogenesis of sepsis: new concepts and implications for future treatment. *BMJ* 2003;326:262–6.
 6. Weighardt H, Heidecke CD, Emmanuilidis K, et al. Sepsis after major visceral surgery is associated with sustained and interferon-gamma-resistant defects of monocyte cytokine production. *Surgery* 2000;127:309–15.
 7. Tamayo E, Fernandez A, Almansa R, et al. Pro- and anti-inflammatory responses are regulated simultaneously from the first moments of septic shock. *Eur Cytokine Netw* 2011;22:82–7.
 8. Annane D, Bellissant E, Cavillon JM. Septic shock. *Lancet* 2005;365:63–78.
 9. Hotchkiss RS, Karl IE. The pathophysiology and treatment of sepsis. *N Engl J Med* 2003;348:138–50.
 10. Cavillon JM, Annane D. Compartmentalization of the inflammatory response in sepsis and SIRS. *J Endotoxin Res* 2006;12:151–70.
 11. Wang ZM, Liu C, Dziarski R. Chemokines are the main proinflammatory mediators in human monocytes activated by *Staphylococcus aureus*, peptidoglycan, and endotoxin. *J Biol Chem* 2000;275:20260–7.
 12. Munoz C, Misset B, Fitting C, et al. Dissociation between plasma and monocyte-associated cytokines during sepsis. *Eur J Immunol* 1991;21:2177–84.
 13. Tetta C, Bellomo R, Inguaggiato P, et al. Endotoxin and cytokine removal in sepsis. *Ther Apher* 2002;6:109–15.
 14. Tetta C, Gianotti L, Cavillon JM, et al. Coupled plasma filtration-adsorption in a rabbit model of endotoxic shock. *Crit Care Med* 2000;28:1526–33.
 15. Ronco C, Brendolan A, Lonnemann G, et al. A pilot study of coupled plasma filtration with adsorption in septic shock*. *Crit Care Med* 2002;30:1250–5.
 16. Formica M, Olivieri C, Livigni S, et al. Hemodynamic response to coupled plasmfiltration-adsorption in human septic shock. *Intensive Care Med* 2003;29:703–8.
 17. Human Medicines Evaluation Unit. *Guidelines for good clinical practice*. London: European Agency for the Evaluation of Medical Products, 1996:17–20.
 18. Levy MM, Fink MP, Marshall JC, et al. 2001 SCCM/ESICM/ACCP/ATS/SIS International Sepsis Definitions Conference. *Intensive Care Med* 2003;29:530–8.
 19. Boffelli S, Rossi C, Anghileri A, et al. Continuous quality improvement in intensive care medicine. The GiViTI Margherita Project—Report 2005. *Minerva Anesthesiol* 2006;72:419–32.
 20. Malacarne P, Langer M, Nascimben E, et al. Building a continuous multicenter infection surveillance system in the intensive care unit: findings from the initial data set of 9,493 patients from 71 Italian intensive care units. *Crit Care Med* 2008;36:1105–13.
 21. Le Gall JR, Lemeshow S, Saulnier F. A new Simplified Acute Physiology Score (SAPS II) based on a European/North American multicenter study. *JAMA* 1993;270:2957–63.
 22. Vincent JL, de Mendonca A, Cantraine F, et al. Use of the SOFA score to assess the incidence of organ dysfunction/failure in intensive care units: results of a multicenter, prospective study. Working group on “sepsis-related problems” of the European Society of Intensive Care Medicine. *Crit Care Med* 1998;26:1793–800.
 - 22a. Bellomo R, Ronco C, Kellum JA, et al. Acute renal failure – definition, outcome measures, animal models, fluid therapy and information technology needs: the Second International Consensus Conference of the Acute Dialysis Quality Initiative (ADQI) Group. *Crit Care* 2004;8:R204–12.
 23. Piantadosi S. *Clinical trial. A methodological perspective*. New York: John Wiley & Sons, 1997.
 24. Schulz KF, Grimes DA. Allocation concealment in randomised trials: defending against deciphering. *Lancet* 2002;359:614–18.
 25. Page M, Rimmel T. [Coupled plasma filtration adsorption: rationale and perspectives in septic shock]. *Can J Anaesth* 2008;55:847–52.
 26. Ronco C, Brendolan A, d’Intini V, et al. Coupled plasma filtration adsorption: rationale, technical development and early clinical experience. *Blood Purif* 2003;21:409–16.
 27. Formica M, Inguaggiato P, Bainotti S, et al. Coupled plasma filtration adsorption. *Contrib Nephrol* 2007;156:405–10.
 28. Kleinbaum D, Kupper L, Morgenstern H. *Epidemiologic research*. New York, NY: Van Nostrand Reinhold, 1982.
 29. Fergusson D, Aaron SD, Guyatt G, et al. Post-randomisation exclusions: the intention to treat principle and excluding patients from analysis. *BMJ* 2002;325:652–4.
 30. Prowle JR, Schneider A, Bellomo R. Clinical review: optimal dose of continuous renal replacement therapy in acute kidney injury. *Crit Care* 2011;15:207.
 31. Annane D, Aegerter P, Jars-Guincestre MC, et al. Current epidemiology of septic shock: the CUB-Rea Network. *Am J Respir Crit Care Med* 2003;168:165–2.
 32. Cohen J, Guyatt G, Bernard GR, et al. New strategies for clinical trials in patients with sepsis and septic shock. *Crit Care Med* 2001;29:880–6.
 33. Perl TM, Dvorak L, Hwang T, et al. Long-term survival and function after suspected gram-negative sepsis. *JAMA* 1995;274:338–45.
 34. Singer M, McNally T, Screation G, et al. Heparin clearance during continuous veno-venous haemofiltration. *Intensive Care Med* 1994;20:212–15.
 35. Zhang Z, Hongying N. Efficacy and safety of regional citrate anticoagulation in critically ill patients undergoing continuous renal replacement therapy. *Intensive Care Med* 2012;38:20–8.
 36. Mariano F, Bergamo D, Gangemi EN, et al. Citrate anticoagulation for continuous renal replacement therapy in critically ill patients: success and limits. *Int J Nephrol* 2011;2011:748320. 1–5.
 37. Mariano F, Tetta C, Stella M, et al. Regional citrate anticoagulation in critically ill patients treated with plasma filtration and adsorption. *Blood Purif* 2004;22:313–19.
 38. Pozzato M, Ferrari F, Cecere P, et al. Safety and efficacy of citrate anticoagulation in septic shock patients treated with couplet plasma filtration adsorption (CPFA). *J Am Soc Nephrol* 2011;22—Congress Proceeding:605A.

BMJ Open

Efficacy of coupled plasma filtration adsorption (CPFA) in patients with septic shock: A multicenter randomised controlled clinical trial

Sergio Livigni, Guido Bertolini, Carlotta Rossi, et al.

BMJ Open 2014 4:

doi: [10.1136/bmjopen-2013-003536](https://doi.org/10.1136/bmjopen-2013-003536)

Updated information and services can be found at:

<http://bmjopen.bmj.com/content/4/1/e003536.full.html>

These include:

Data Supplement

"Supplementary Data"

<http://bmjopen.bmj.com/content/suppl/2014/01/09/bmjopen-2013-003536.DC1.html>

References

This article cites 34 articles, 4 of which can be accessed free at:

<http://bmjopen.bmj.com/content/4/1/e003536.full.html#ref-list-1>

Open Access

This is an Open Access article distributed in accordance with the Creative Commons Attribution Non Commercial (CC BY-NC 3.0) license, which permits others to distribute, remix, adapt, build upon this work non-commercially, and license their derivative works on different terms, provided the original work is properly cited and the use is non-commercial. See: <http://creativecommons.org/licenses/by-nc/3.0/>

Email alerting service

Receive free email alerts when new articles cite this article. Sign up in the box at the top right corner of the online article.

Topic Collections

Articles on similar topics can be found in the following collections

[Infectious diseases](#) (195 articles)

[Intensive care](#) (38 articles)

Notes

To request permissions go to:

<http://group.bmj.com/group/rights-licensing/permissions>

To order reprints go to:

<http://journals.bmj.com/cgi/reprintform>

To subscribe to BMJ go to:

<http://group.bmj.com/subscribe/>